

Ben Can Run and The Map



Level 1 – Pink

BookLife
Readers

Helpful Hints for Reading at Home

The graphemes (written letters) and phonemes (units of sound) used throughout this series are aligned with Letters and Sounds. This offers a consistent approach to learning whether reading at home or in the classroom. Books levelled as 'a' are an introduction to this band. Readers can advance to 'b' where graphemes are consolidated and further graphemes are introduced.

HERE IS A LIST OF NEW GRAPHEMES FOR THIS PHASE OF LEARNING. AN EXAMPLE OF THE PRONUNCIATION CAN BE FOUND IN BRACKETS.

Phase 2			
s (sat)	a (cat)	t (tap)	p (tap)
i (pin)	n (net)	m (man)	d (dog)
g (go)	o (sock)	c (cat)	k (kin)
ck (sack)	e (elf)	u (up)	r (rabbit)
h (hut)	b (ball)	f (fish)	ff (off)
l (lip)	ll (ball)	ss (hiss)	

HERE ARE SOME WORDS WHICH YOUR CHILD MAY FIND TRICKY.

Phase 2 Tricky Words			
the	to	l	no
go	into		

HERE ARE SOME WORDS THAT MIGHT NOT YET BE FULLY DECODABLE.

Challenge Words			
gets	hops	sand	

TOP TIPS FOR HELPING YOUR CHILD TO READ:

- Allow children time to break down unfamiliar words into units of sound and then encourage children to string these sounds together to create the word.
- Encourage your child to point out any focus phonics when they are used.
- Read through the book more than once to grow confidence.
- Ask simple questions about the text to assess understanding.
- Encourage children to use illustrations as prompts.

Ben Can Run and The Map

Written by
Robin Twiddy &
Gemma McMullen

Illustrated by
Drue Rintoul

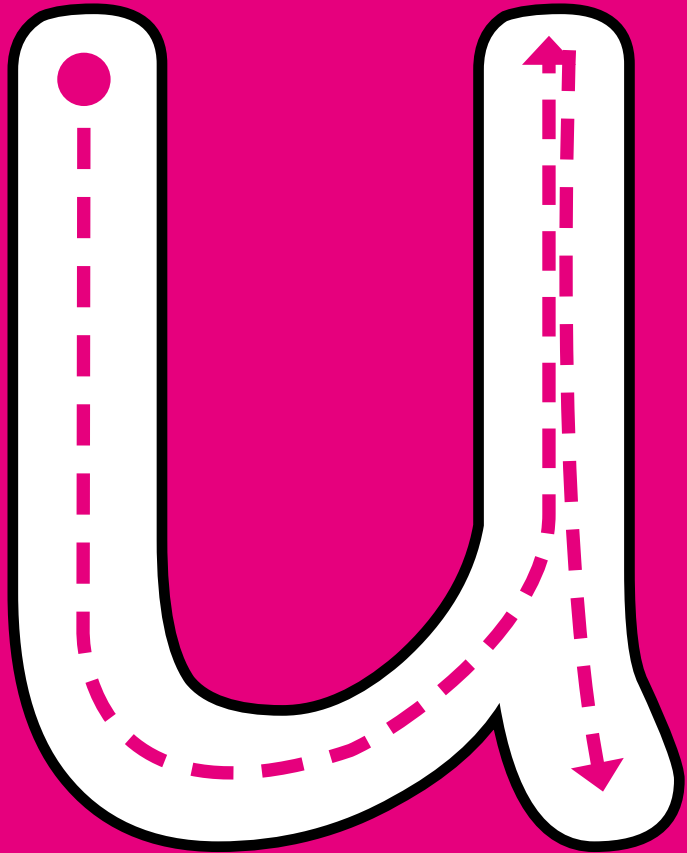


PHASE 2

1b

This book is a 'b' level and is a pink level 1 book band.

Can you say this sound and draw it with your finger?



Ben Can Run



Written by
Robin Twiddy

Illustrated by
Drue Rintoul

Ben can run.



Ben can hop.



Ben hops in the mud.



HOP, HOP,
HOP!

Ben is in a mess.



Ben is sad.



Mum gets the mud off.



Ben can run.



Ben can hop.

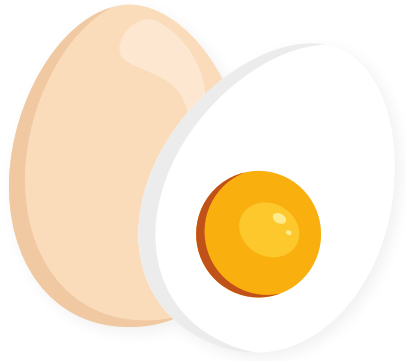


No, Ben, not in the mud!



Can you match the object to the sound that it starts with?

u



r

e



The Map



Written by
Gemma McMullen

Illustrated by
Drue Rintoul

It is Sam.



It is Pam.



On the sand.



Pam has a map.



Sam has a map.



Pam is sad!



Sad, sad Pam.



Pam has the map.



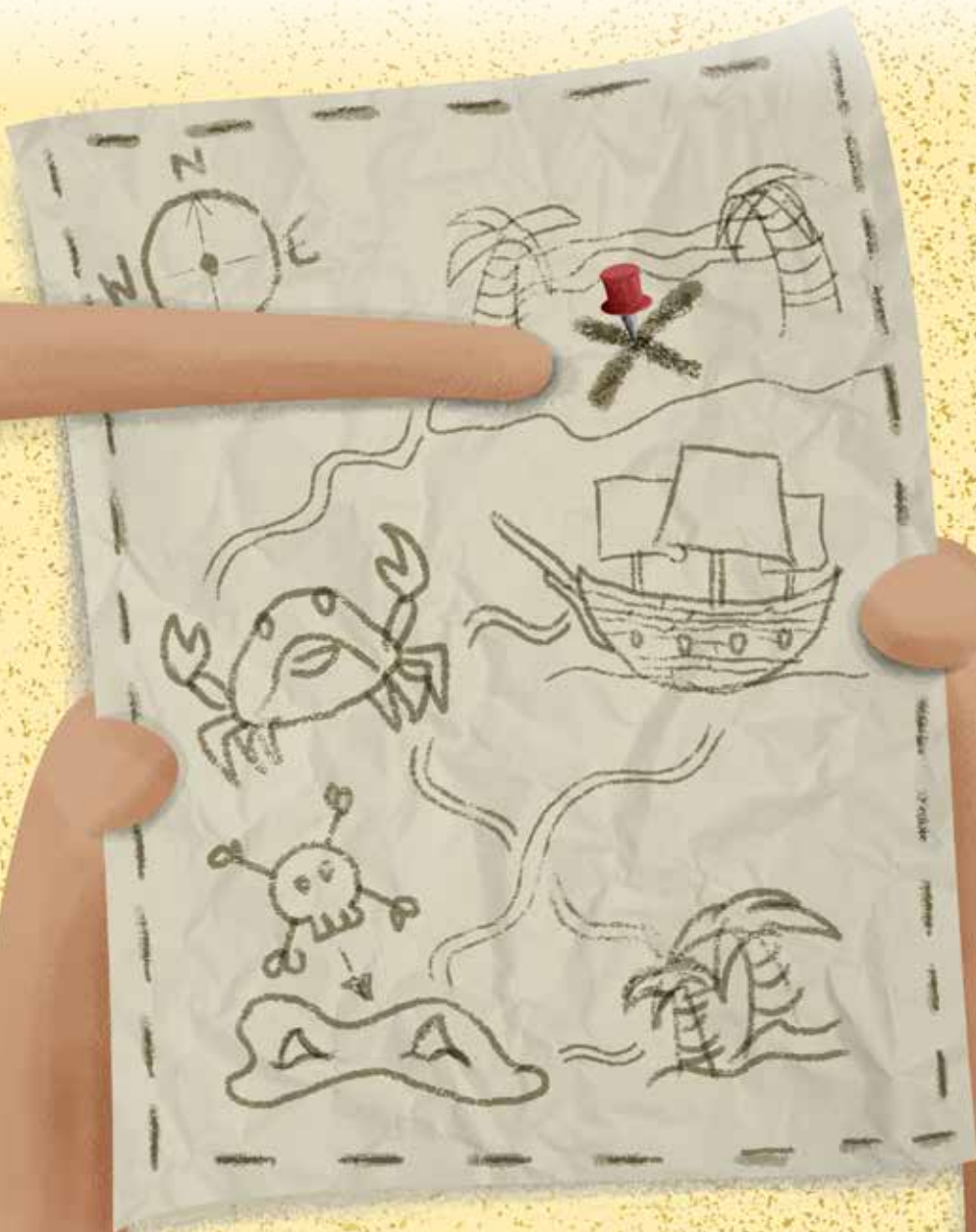
Tip the map Pam.



Tip the map Sam.



Pin in the map.



Dig it up.



Ben Can Run

Written by Robin Twiddy

Illustrated by Drue Rintoul

The Map

Written by Gemma McMullen

Illustrated by Drue Rintoul

An Introduction to BookLife Readers...

Our Readers have been specifically created in line with the London Institute of Education's approach to book banding and are phonetically decodable and ordered to support each phase of the Letters and Sounds document.

Each book has been created to provide the best possible reading and learning experience. Our aim is to share our love of books with children, providing both emerging readers and prolific page-turners with beautiful books that are guaranteed to provoke interest and learning, regardless of ability.

BOOK BAND GRADED using the Institute of Education's approach to levelling.

PHONETICALLY DECODABLE supporting each phase of Letters and Sounds.

EXERCISES AND QUESTIONS to offer reinforcement and to ascertain comprehension.

BEAUTIFULLY ILLUSTRATED to inspire and provoke engagement, providing a variety of styles for the reader to enjoy whilst reading through the series.

AUTHOR INSIGHT: ROBIN TWIDDY

Robin Twiddy possesses a Cambridge-based first class honours degree in psychosocial studies. He also holds a certificate in Teaching in the Lifelong Sector, and a post graduate certificate in Consumer Psychology. A father of two, Robin has written over 70 titles for BookLife.

AUTHOR INSIGHT: GEMMA McMULLEN

Gemma McMullen is one of BookLife Publishing's most multi-faceted and talented individuals. Born in Newport, Gwent, she studied at the University of Northampton, where she graduated with a BA (Hons) in English and Drama. She then attended the University of Wales where she obtained her PGCE Primary qualification, and has been teaching ever since. Her experience as a teacher enables her to find exactly what makes children focus and learn, and allows her to write books that amuse and fascinate their readers.

PHASE 2

1b

This book is a 'b' level and is a pink level 1 book band.